



Marix Technologies

**Sun Java™ Plug-in,
Microsoft Virtual Machine,
Marix File Manager with AppLink™
Special Instructions**

July, 2003

Table of Contents

ABOUT THIS DOCUMENT.....	1
ABOUT THE SUN MICROSYSTEMS, INC. JAVA PLUG-IN	1
USING JAVA PLUG-IN (1.3.1 AND EARLIER).....	2
DISABLING THE JAVA PLUG-IN (1.3.1_01 AND LATER)	3
ABOUT THE BUILT-IN MICROSOFT VIRTUAL MACHINE (VM)	4
DISABLING THE JAVA PLUG-IN (1.4.0_01 AND LATER)	6
Customer Service/Support	8

About This Document

This document explains some of the special procedures needed for smooth functioning of the Marix File Manager and Marix AppLink with the Sun Java Plug-in.

About the Sun Microsystems, Inc. Java Plug-in

The Sun Java Plug-in enables enterprise customers to direct applets or JavaBeans™ on their intranet Web pages to run using Sun's **Java 2 Runtime Environment, Standard Edition (JRE)** instead of the Web browser's default virtual machine. Sun's JRE provides a Java Compatible™ environment for most Web browsers. That means consistency and reliability when running applets.

In Sun Microsystems' ongoing effort to make it easy to deploy applications and applets written in the Java programming language, Sun now includes Java Plug-in software as part of the Java Runtime Environment (JRE) Solaris/Linux/Microsoft Windows Production Release. Including Java Plug-in software with these JRE releases allows deployment of applets to Web browsers that take full advantage of the latest capabilities and features of the Java 2 SDK, Standard Edition (Java 2 SDK™). Developers can write Java 2 software-based applets today and deploy them to existing Netscape Navigator™ or Microsoft Internet Explorer users immediately.

Note that Netscape Navigator™ (4.X for Solaris/Linux/Microsoft Windows) and Microsoft Internet Explorer (Microsoft Windows) already support an older version JRE. The software included with Marix was designed and tested to operate these built-in, stable versions of the JRE. Note that Netscape 7 uses the Java Plug-in by default. The Marix software may be used with the Java Plug-in *only* with Netscape 7.

To prevent operating problems with Marix, we recommend disabling the Java Plug-in. To determine if your browser has problems with the Java Plug-in, try to open your Marix WebTop. If your browser cannot fully load the Marix WebTop you may need to disable your installed Java Plug-in. (Figure 1) below is an example of what the browser will look like if the Marix WebTop is unable to load, because of a Java Plug-in compatibility issue.



Figure 1

Using Java Plug-in (1.3.1 and earlier)



To use the Java Plug-in (version 1.3.1 and earlier) to run applets on Web pages, you need to convert applet tags on those Web pages. Developers should use the [Java Plug-in HTML Converter](#). The HTML Converter is a tool, included with the SDK that automatically converts applet tags to the format required by the Java Plug-in. You can also convert pages manually, though that is not recommended for most Web authors/developers.

The Java Plug-in for versions 1.3.1 and earlier *does not automatically replace the browser's default JRE*. To see which versions of the Java Plug-in that are installed on your Microsoft Windows PC, look in the control panel. (Figure 2) shows the Java Plug-in control panel applets for both version 1.3.1 and 1.3.1_01.



Figure 2

If you wish to disable the Java Plug-in 1.3.1 and earlier, open the appropriate control panel applet and select the tab labeled **Basic** and un-check the box labeled *Enable Java Plug-in*, as seen in (Figure 3). Note that this is not required to use your Marix WebTop.

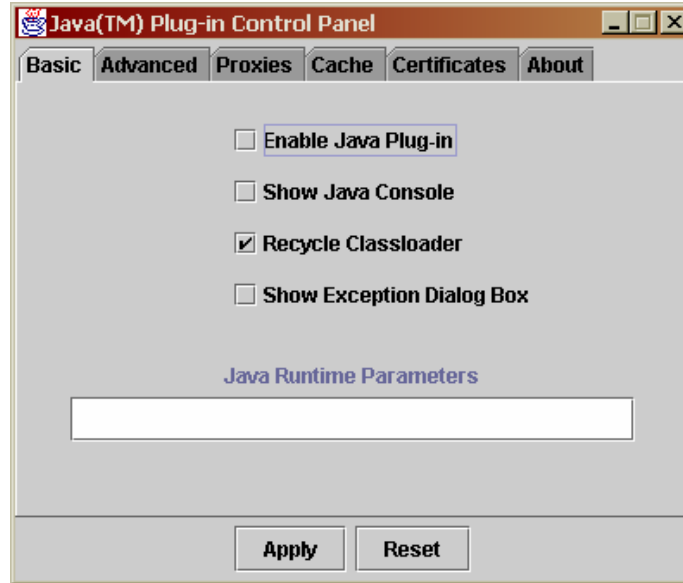


Figure 3

Disabling the Java Plug-in (1.3.1_01 and later)



Java Plug-in
1.3.1_01

To use the Java Plug-in (version 1.3.1_01 and later) to run applets on Web pages, you *do not* need to do anything. Newer versions of the Java Plug-in *automatically* replace the browser's default Java Runtime Environment.

To use the Marix WebTop with Microsoft Internet Explorer, you **must** disable the automatic Java Runtime Environment *replacement*. The Java Plug-in is incompatible with software used by Marix Technologies to run your applications over the Web.

To disable the JRE replacement for Java Plug-in 1.3.1_01 and later, simply open the appropriate control panel applet and select the tab labeled *Browsers* and un-check the box labeled *Microsoft Internet Explorer*, (Figure 4).

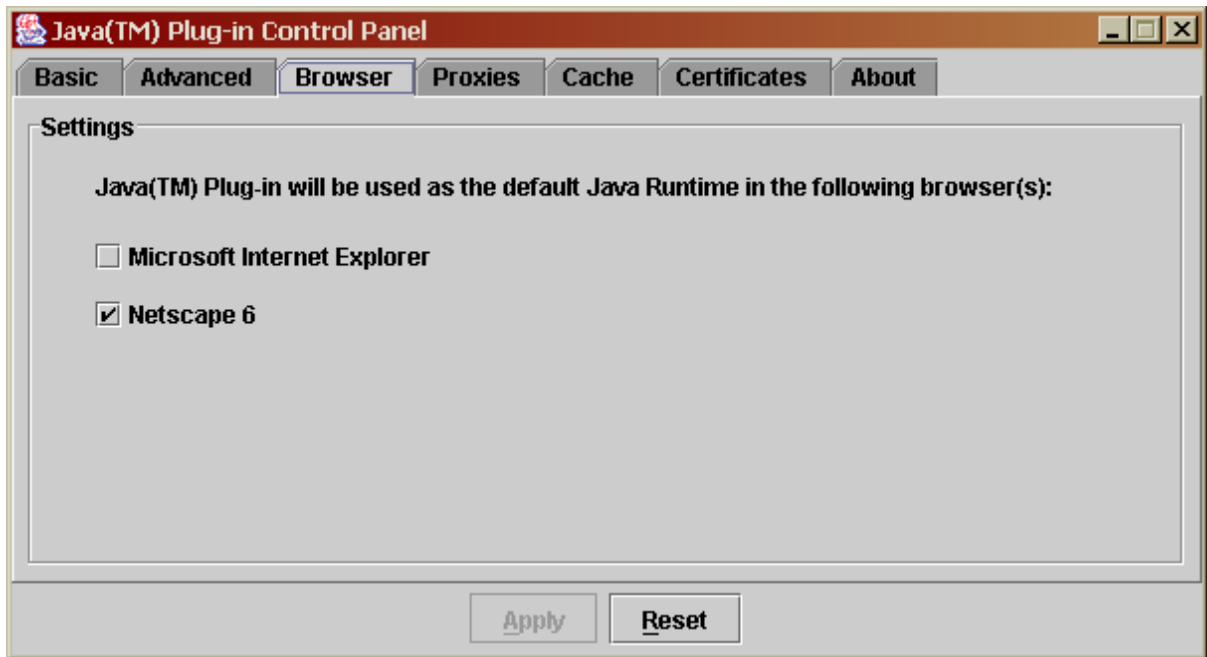


Figure 4

NOTE: The Java Plug-in *is* compatible with Netscape 6 and the Marix WebTop.

NOTE: You cannot launch applications by clicking on your documents, with Netscape 6, but you can still launch your applications and open Marix AppLink documents).

About the Built-in Microsoft Virtual Machine (VM)

Microsoft Internet Explorer (MSIE) has included a built-in JRE, called the Microsoft VM. MSIE versions 5.0 and above contain a VM which will operate Marix software. In most cases, the user does not need to do anything to use the default Microsoft VM with Java-enabled Web pages.

Microsoft Windows XP and MSIE 6.0 and above include a feature called *Install on Demand*, which automates the installation of component features within MSIE, as they are needed. The Microsoft VM automatically downloads and installs the first time a user accesses a Web page containing Java content, if the user's MSIE installation does not already include Java.

When the user first accesses a Java-enabled Web page, the following dialog will appear (Figure 5).

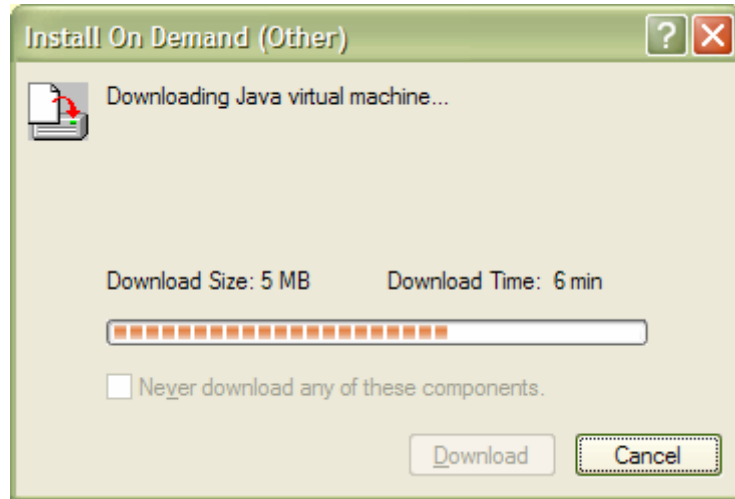


Figure 5

Clicking the **Download** button starts the component download of the Microsoft VM. When the download completes, the following dialog (Figure 6) appears to prompt the user to allow the *installation* of the Microsoft VM.



Figure 6

If the user clicks the **Yes** button and allows the installation process to proceed, the following dialog box (Figure 7) will appear to show the installation progress.

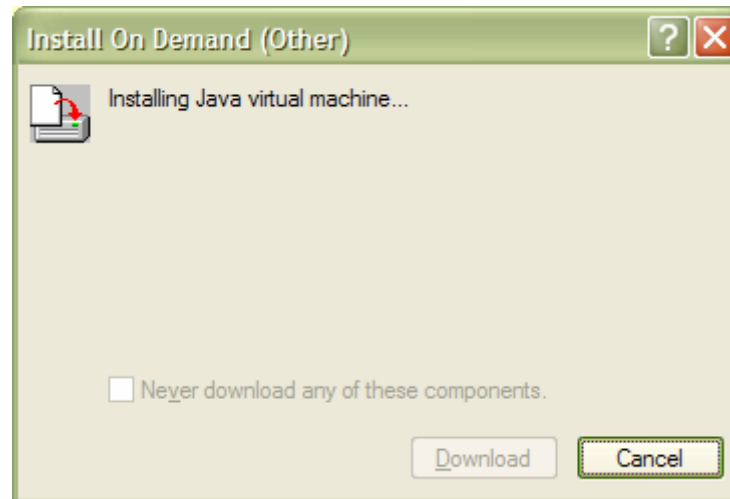


Figure 7

When the installation process completes, the Java-enabled content will finish loading and execute normally.

If the user has previously installed the Java Plug-in, version 1.4.0 or later, *and then uninstalled the Java Plug-in*, the Microsoft VM may repeatedly prompt to re-install the Microsoft VM. To correct this problem, the user must re-install the Java Plug-in version 1.4.0 or later and *disable* the Plug-in, as described in the next section.

Disabling the Java Plug-in (1.4.0_01 and later)



To use the Marix WebTop with Microsoft Internet Explorer, you **must** disable the automatic Java Runtime Environment *replacement*. This is because the Java Plug-in is incompatible with software used by Marix Technologies to run your applications over the Web.

To disable the JRE replacement for Java Plug-in 1.4.0 and later, simply follow the same directions indicated for disabling the Java Plug-in 1.3.1_01 and later (page 3).

There is one additional step the user must complete, to fully disable the Java Plug-in 1.4.0 and later. The user must modify the MSIE properties that specify which version of Java to use when accessing Java content. Select **Tools** → **Internet Options** from the MSIE main menu. Select the **Advanced** tab from the top of the dialog window. See (Figure 8).

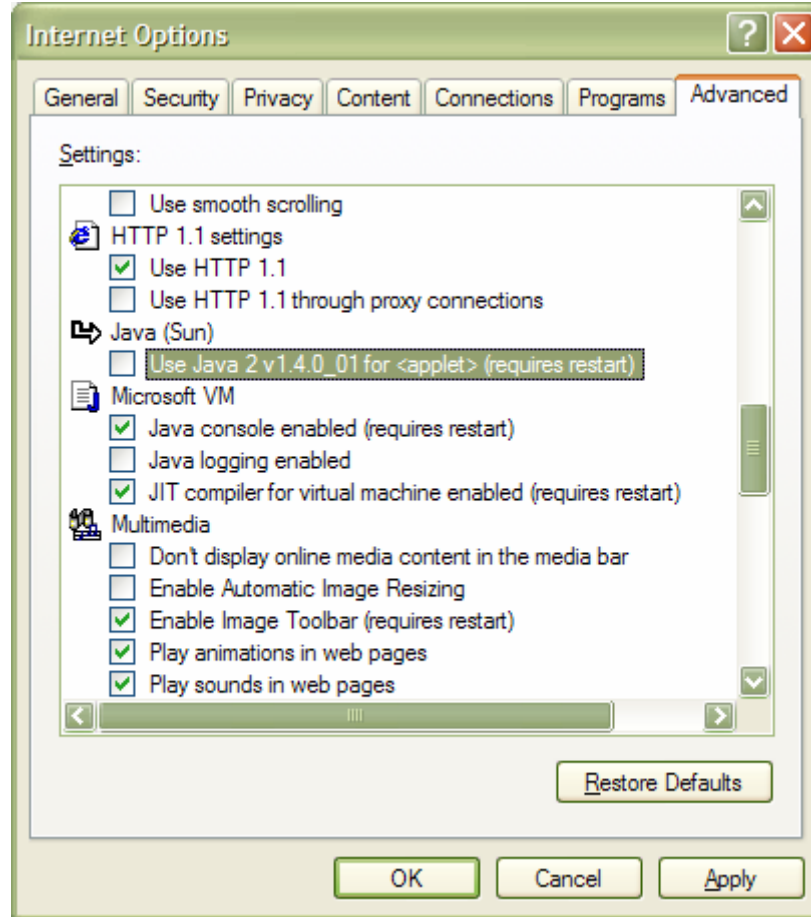


Figure 8

Ensure that the *Java (SUN)* option is unchecked and that the *JIT compiler for virtual machine enabled* option is checked. This will ensure that the built-in Microsoft VM is used in place of the Sun Java Plug-in.



Customer Service/Support

If you have comments about this document or our software, contact us through the following methods:

Mail: Customer Service
Marix Technologies, Inc.
12450 Wayzata Blvd
Suite 121
Minnetonka, MN 55305

Phone: 952-548-9200

E-mail:

If you need technical support or for other support-related issues: please contact support@marix.com.